

- ♦ Givim wara long kaukau gaden oltaim sapos igat planti wara klostu (wara tait).
- ♦ Rausim na kukim ol olupela kaukau rop na lip long gaden.
- ♦ Putim mals (drai gras na lip) long kaukau gaden bai i holim wara insait long graun.
- ♦ Larim olupela gaden i kamap bus gen bai ol binatang i go pastaim na wokim gaden.

Dispela binatang nogut em i hat tru long kilim wantaim ol marasin. Ino gat wanpela kaukau iken abrusim dispela binatang nogut na ol save man-meri long olgeta hap long graun (wol) i wok long painimaut yet.

Tasol klinpela gaden i ken abrusim na daunim hevi bilong dispela wivol.

Sapos yu laik save moa long dispela toktok na ol arapela wok bilong NARI, rait i kam long:

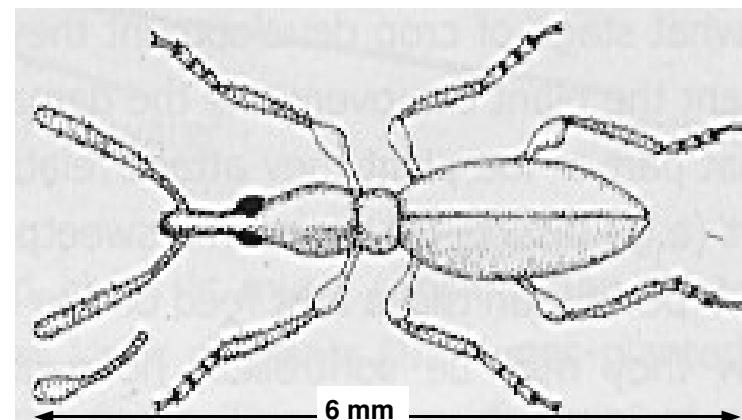
Information Centre  
NARI Main Highlands Programme  
Aiyura Valley  
PO Box 384  
KAINANTU  
Eastern Highlands Province

Telephone: (675) 737 3500/ 737 3561  
Facsimile: (675) 737 3516  
Email: narimh@global.net.pg



National Agricultural Research Institute

## **Binatang Nogut Bilong Kaukau (Swit Poteto Wivol)**



### **LUKAUTIM YU YET LONG TAIM NOGUT**

NARI TOKTOK SERIES  
AIY014P

December 2002

## TOK IGO PAS

**Swit Poteto Wivol** em i namba wan binatang nogut bilong kaukau insait long Papua Niugini. Dispela binatang i save mekim lukluk na swit bilong kaukau igo nogut tru na ino gutpela long salim, givim pik o arapela animol. Dispela binatang nogut isave kamapim bikpela bargarap long taim bilong bikpela san na ples i drai tumas.

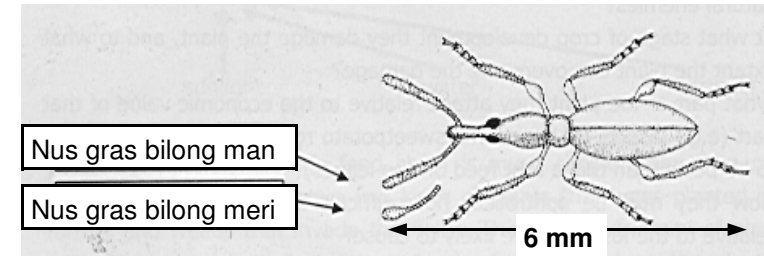
## WIVOL I LUK OLSEM WANEM?

Mama binatang em i luk olsem wanpela anis tasol em ino anis tru. Em i gat longpela nus. Sapos yu holim ol o mekim nois, ol i save pundaun hariap igo daun long graun na giaman olsem ol i dai pinis. Piksa 1 i soim dispela wivol wantaim tupela nusgras bilong man na meri.

## ROT WIVOL I BAGARAPIM KAUKAU

- ♦ Mama binatang i putim kiau insait long kaukau. Dispela ol kiau i kamap liklik sinek na kaikai kaukau.
- ♦ Liklik sinek wantaim mama wivol i wokim hul insait long kaukau na putim pekpek taim ol i kaikai.

- ♦ Pekpek wantaim smel bilong pekpek bilong wivol insait long kaukau i save bagarapim (poisinim) lukluk na swit bilong kaukau.
- ♦ Kaukau i bagarap i isi tru long kisim ol narapela sik nogut olsem *Black Rot* o kaukau i sting.



Piksa 1. Nus gras bilong man wivol i strepela tasol bilong meri em i sotpela na arere i raun

## ROT BILONG LUKAUT NA DAUNIM HEVI

Swit Poteto Wivol em i wanpela strongpela na hatpela binatang nogut long rausim o kilim. Tasol igat sampela rot bilong abrusim na daunim bagarap.

- ♦ Senisim senisim narapela kain kaikai long hap graun kaukau i stap (krop rotesen).
- ♦ Planim strongpela na gutpela (klinpela) kaukau rop i kam long hap we ino gat wivol.
- ♦ Karamapim kaukau wantaim graun bai ino ken stap ples kilia.