

Yu ken kisim moa kopi bilong dispela toktok
na moa infomesen long:



**National Agriculture Research Institute
Wet Lowlands Islands Programme**

Lowlands Agricultural Experiment Station
LAES Keravat

Information Center

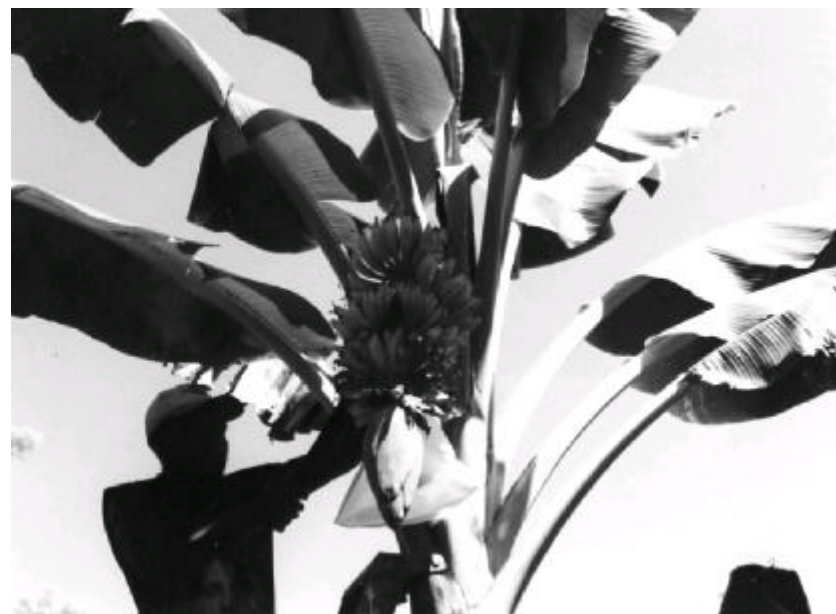
P.O. Box 204
Kokopo
East New Britain Province
Papua New Guinea

Telephone: (675) 983 9200 / 9145
Facsimile: (675) 983 9129
Email: outreach.k@global.net.pg
narilli@global.net.pg



National Agricultural Research Institute

Lukaut long Banana Prut Lang !



NARI TOKTOK
KER005P

Decemba 2002

NARI EM WANEM

Nesanal Agrikalsa Risas Insitut (NARI) em i kamap long wanpela mama lo long Nesanal Palamen bilong Papua Niugini long mun Julai insait long yia 1996. NARI em wanpela long ol han bilong gavman wei bai kamapim gutpela wok painim aut long ol kainkain kaikai bilong gaden, ol narapela niupela kain kaikai ol man ino save gut, ol krop bilong salim, ol avus na tu lukluk long wei long lukautim ol resos (giraun, wara, diwai) bilong kantri. NARI tu i save kamapim ol wok painim aut long ol sik, sekim ol gutpela na nogut marasin i stap insait long ol plants na givim toksave long stretim ol dispela kain hevi. NARI save givim niupela save long wok agrikalsa insait long Papua Niugini. Ol wok NARI i kamapim em long halivim ol liklik fama long ples.

Nambawan as tinting bilong NARI em long kamapim gut wok agrikalsa insait long kantri bihain long ol wok painim aut. Long kamapim gut wok blong agrikalsa, NARI save painim aut ol gutpela wei, traim ol niupela na gutpela wei and sapos i wok, em i traim long soim ol fama.

Long dispela wei, NARI laik kamapim:

- kirapim gutpela na strongim wok bilong ol fama, wei long wok didiman i go stret na bai strongim agrikalsa long nau na bihan taim,
- bai kamapim wei long kisim moni, bai kamapim gutpela kaikai na moa kaikai olgeta taim na tu bai stretim gutpela sindaun bilong ol manmeri long Papua Niugini

Dispela toktok em Amanda Mararuai i raitim, PNG Fruit Fly Project / NARI Wetlowlands Islands Programme, long mun Decemba 2002. Ol samting i stap long dispela toktok em ol i kamap long ol gutpela luksave i bin stap long mun Decemba 2002. Ol tokaut inap senis sapos ol niupela luksave i kamap.

3. Kisim bikpela bek, karamapim banana na pasim ai bilong bek.



4. Rausim bek taim ol banana i mau pinis na havestim banana bilong kaikai. Yu ken usim bek gen long karamapim narapela banana olsem bipo.

Narapela kain binatang i save bagarapim banana oli kolim **Banana Skeb Mot**. Sapos yu laik kisim sampela infomesen long dispela yu ken askim ol lain bilong **NARI LAES Keravat**.

2. Putim graun long hap yu katim long rausim plaua na ol bagarap han bilong banana.



Lukaut long Banana Prut Lang !

Prut lang bilong banana em i wanpela lang nogut na i stap long olgeta hap bilong bikpeles PNG. Em i save putim kiau insait long banana na dispela kiau i save kamapim ol liklik sinek insait long prut. Dispela ol liklik sinek i save kaikai insait bilong prut na prut i save bagarap. Bikpela bagarap i ken kamap long banana sapos yumi i no painim rot bilong pasim meri lang long putim kiau insait long prut.

Dispela nogut lang bilong banana ino save stap bipo long ol ailan provins tasol nau em i kamap pinis long East New Britain (Gazelle Peninsula). I gat bikpela bilip olsem dispela i bin kamap taim ol man i bin karim planti banana long bikpeles PNG i kam long ENB bihain taim volcano i bin pairap. Wanpela wok painim aut we PNG Fruit Fly Project na NAQIA i wokim i soim olsem dispela lang bilong banana i kamap pinis insait long Gazelle Peninsula.

Long pasim bagarap bilong dispela lang bilong banana, wanpela isi rot em long karamapim banana wantaim lip bilong banana yet (lukim piksa long namel) bipo banana em i redi. Dispela bai stopim ol meri lang long putim kiau insait long banana.

Long pasim dispela banana lang bilong go long ol narapela hap long ailan provins or hap bilong ENB we em ino kamap yet, no ken karim banana long Gazelle Peninsula i go aut long ol dispela hap.

Wei long karamapim

1. Rausim plaua na ol han bilong banana i bagarap pinis

